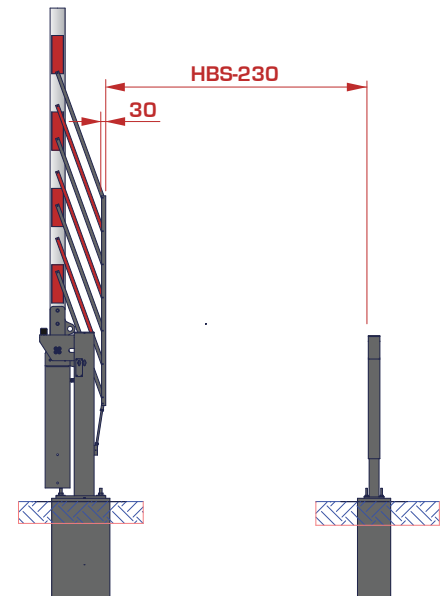
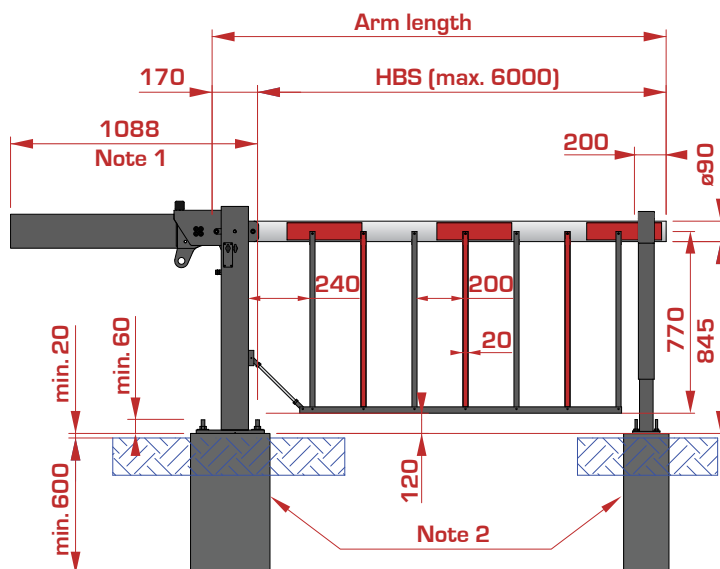


## Manual barrier with bottom skirt

- Up to 6m
- Closure possible with cylinder lock and padlock
- Can be locked in open or closed position

### Technical drawings



#### Notes

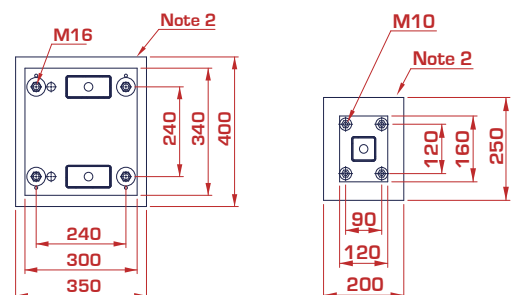
1. Maximum value for HBS 4m u/i 9m and less for shorter arm lengths.  
e.g. 700mm for HBS 2m and 900mm for HBS 3m.
2. Concrete footing  
Minimum protruding height above ground level = 20mm.  
Minimum embedment depth = 600mm (dependent on type of soil and frost line).

#### Arm

Round aluminium tube, Ø 90 x 3mm

#### Finishing

- Surface treatment: blasted and metallized
- Finished off with a thermo-hardened polyster coating
- Red reflective strips





# BORMET

Your safe partner in access

✉ [info@bambormet.be](mailto:info@bambormet.be)

☎ +32 11 31 26 56

📍 Ambachtstraat 1137, 3850 Nieuwerkerken, Belgium