

## Wenen

### Look and feel

Wooden beams (standard 50/22) with space in between

Dimensions in agreement

### Types

Manual or automatic

Sliding gate: cantilevered or on rail

Swing gate: single or double

### Finishing

Surface treatment: blasted and metallized

Finishing: thermohardened polyester coating in RAL-colour of choice

### Operation

Remote control

Keypad

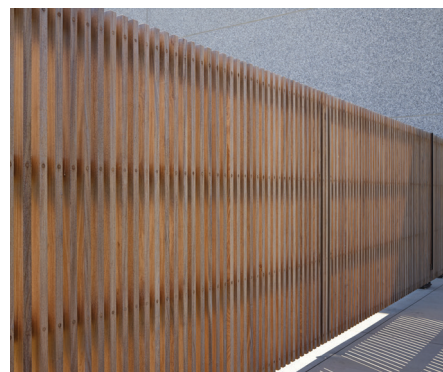
Intercom

Videophone

GSM-remote control

GSM-intercom

Key switch



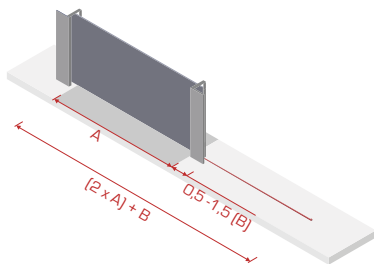
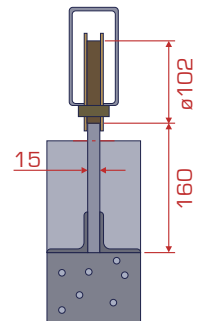
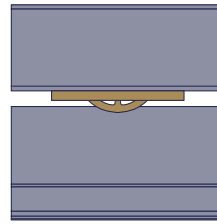
## Sliding gate on rail

With a sliding gate on rail, a rail is placed in the road surface over which the sliding gate slides. The guide wheel is fixed and slides with the sliding gate.

With this configuration, a foundation is poured on which the rail is placed. Then the remaining space is filled until the rail protrudes 1.5 to 2cm from the ground.

With a sliding gate, the width of the driveway must be available adjacent to the driveway. For a sliding gate on rail, an additional 0.5m to 1.5m\* must be kept clear.

*\*depending on the width and type of sliding gate*



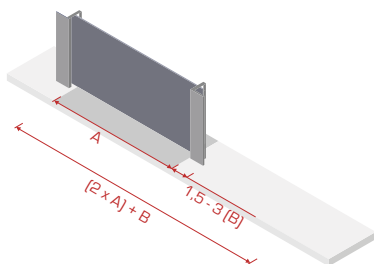
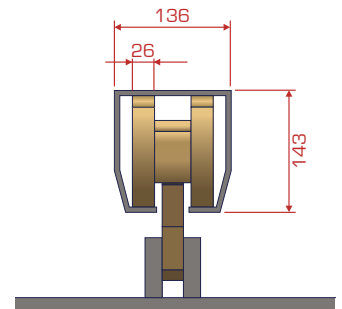
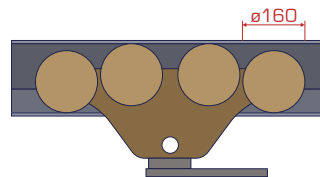
## Cantilevered sliding gate

A cantilevered sliding gate is supported by wheels placed to the left or right of the sliding gate.

These wheels guide and keep the cantilevered sliding gate straight while opening and closing. The wheels do not move along with the gate and are attached to the base plate of the pillar.

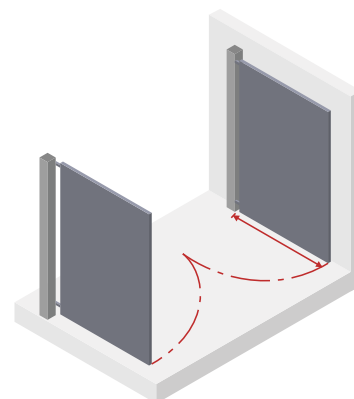
For a sliding gate, the width of the entryway must be available adjacent to the entryway. With a cantilevered sliding gate, an additional 1.5m to 3m\* must be kept clear.

*\*depending on the width and type of sliding gate*



## Swing gate

For a swing gate, the length of the entryway must be longer than 1 wing in the open position.





# BORMET

Your safe partner in access

✉ [info@bambormet.be](mailto:info@bambormet.be)

☎ +32 11 31 26 56

📍 Ambachtstraat 1137, 3850 Nieuwerkerken, Belgium