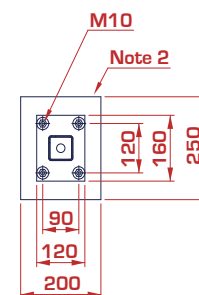
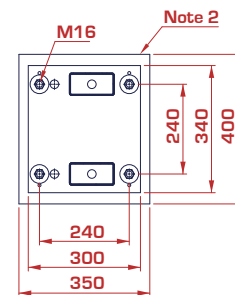
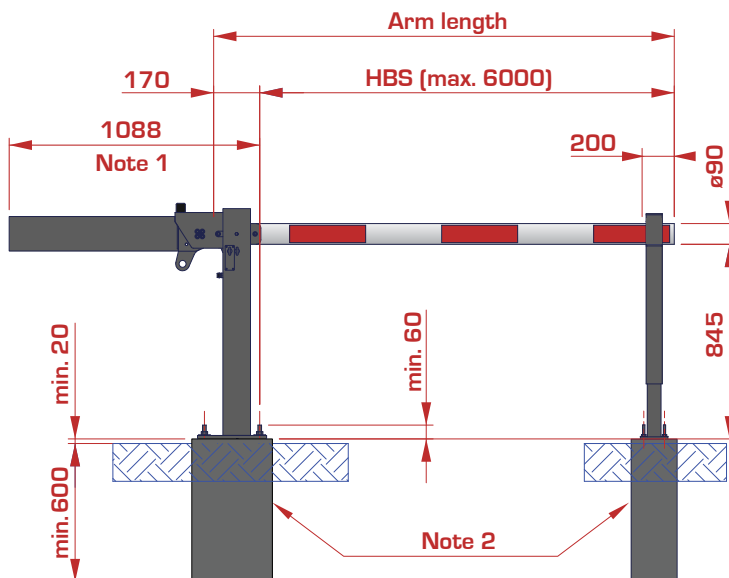


Manual barrier with support pole

- Up to 6m
- Closure possible with cylinder lock and padlock
- Can be locked in open or closed position

Technical drawings



Notes

1. Maximum value for HBS 4m u/i 9m and less for shorter arm lengths.
e.g. 700mm for HBS 2m and 900mm for HBS 3m.
2. Concrete footing
Minimum protruding height above ground level = 20mm.
Minimum embedment depth = 600mm (dependent on type of soil and frost line).

Arm

Round aluminium tube, Ø 90 x 3mm

Finishing

- Surface treatment: blasted and metallized
- Finished off with a thermo-hardened polyster coating
- Red reflective strips



BORMET

Your safe partner in access

✉ info@bambormet.be

☎ +32 11 31 26 56

📍 Ambachtstraat 1137, 3850 Nieuwerkerken, Belgium