

Vinci code lock

Mechanical code lock

The Vinci code lock requires no battery or electricity to operate. The lock unlocks only when the correct code is entered.

This code can be 4 to 6 digits. Because the code panel is located on both sides of the lock, different codes can be set for entry and exit. As an additional security measure, the code can only be changed when the Vinci code lock is removed from the gate.

The Vinci code lock can also be locked with a deadbolt. If the deadbolt is active, the correct code will not open the access.

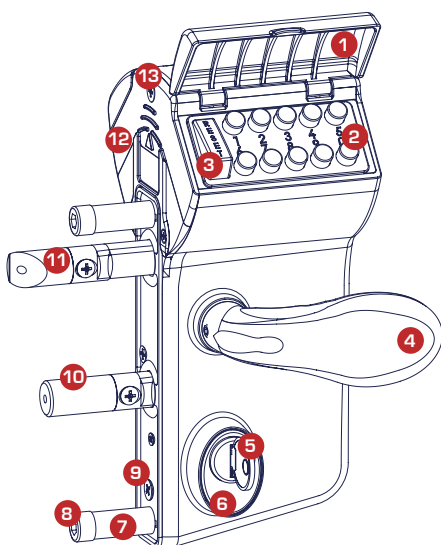


ISO 9227 KTL

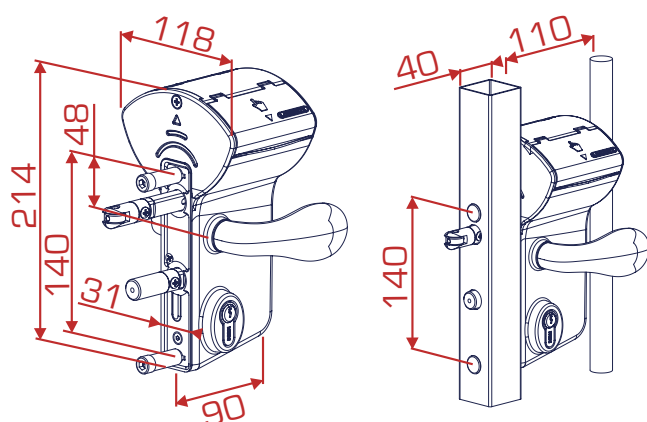
Polyamide cover plate Protection against rain and dust

Available colors Silver
 RAL 6005 (green)
 RAL 7016 (anthracite gray)
 RAL 9005 (black)

Technical information



- 1 Cover plate
- 2 Keypad
- 3 Reset button
- 4 Handle
- 5 Key
- 6 Cover plate for lock
- 7 Spacer tube
- 8 Hexagon screw
- 9 Night lock
- 10 Cross head screw
- 11 Self-locking bolt
- 12 Cross head screw for lid





BORMET

Your safe partner in access

✉ info@bambormet.be

☎ +32 11 31 26 56

📍 Ambachtstraat 1137, 3850 Nieuwerkerken, Belgium